

# SAFMC APPLICATION OF COASTAL AND MARINE SPATIAL PLANNING TO MANAGE DEEPWATER CORAL ECOSYSTEMS OFF THE SOUTHEASTERN UNITED STATES



**Stephen Blair**

Miami-Dade County and SAFMC Coral Advisory Panel Chairman

**Roger Pugliese**

SAFMC staff and SAFMC CMSP Lead

**Jocelyn Karazsia**

NOAA Fisheries and SAMFC Coral Advisory Panel Member



# South Atlantic Fishery Management Council

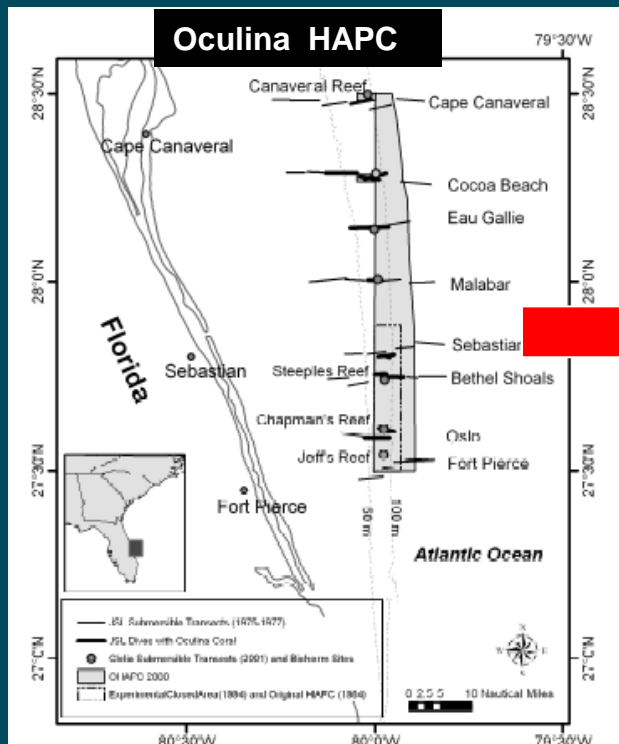


- One of 8 US regional councils created in 1976
- Manages fisheries, fishery resources and fish habitat in the EEZ off NC, SC, GA and east FL
- Prepares Fishery Management Plans to ensure sustainability of fisheries and fishery resources
- Designates Essential Fish Habitat (EFH) and EFH Areas of Particular Concern for Managed Species to address fishing and non-fishing impacts
- Designates areas for special protection Habitat Areas of Particular concern (e.g., HAPCs)

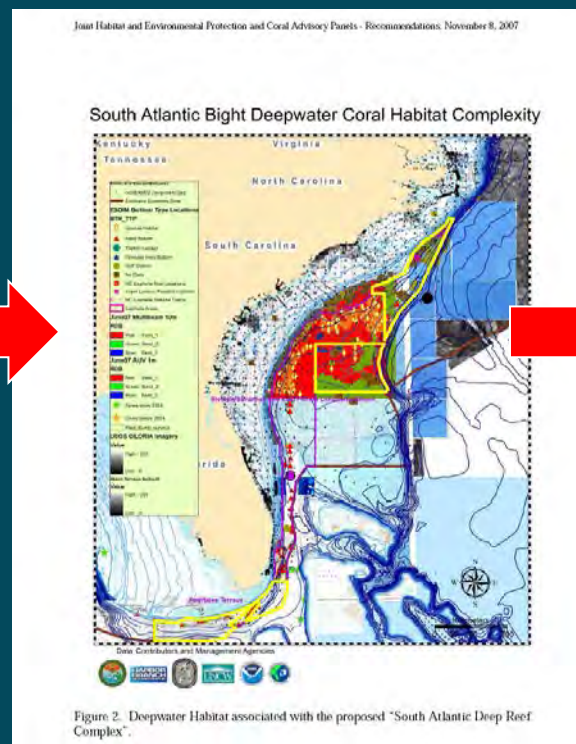


# Progression to Comprehensive Ecosystem-Based Management

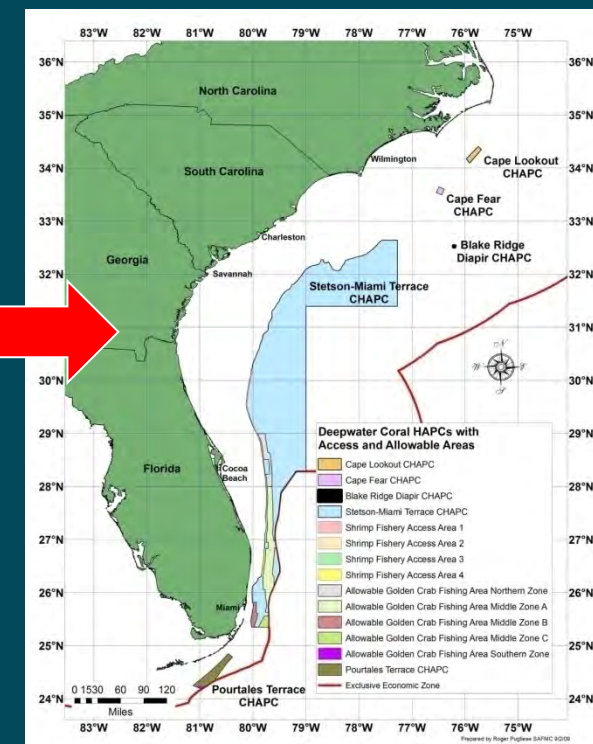
1980.....2000.....2009  
 Place-based/species specific - - - - Integrated Multi-species Mgmt - - - - Ecosystem Base Mgmt (CMSP)



From Reed et al.



From SAFMC IMS



From SAFMC (2010)

# SAMFC Ecosystem-Based Management Plans

**Habitat Plan for the Southeast Region (1998)**

**Fishery Ecosystem Plan (2009)**

**Comprehensive Ecosystem-Based Amendment 1 (CEBA1) (2009)**

- Establish deepwater Coral HAPCs (CHAPCs); Integrate Golden Crab and Shrimp Fishing Areas within CHAPCs; Define Essential Fish Habitat (EFH) and (EFH-HAPC) for specified Fishery Management Plans (FMPs).



## COMPREHENSIVE ECOSYSTEM-BASED AMENDMENT 1 FOR THE SOUTH ATLANTIC REGION



AMENDMENT 8 TO THE FISHERY MANAGEMENT PLAN FOR THE SHRIMP FISHERY OF THE SOUTH ATLANTIC REGION  
AMENDMENT 19 TO THE FISHERY MANAGEMENT PLAN FOR THE COASTAL MIGRATORY PELAGIC RESOURCES IN THE ATLANTIC AND GULF OF MEXICO  
AMENDMENT 6 TO THE FISHERY MANAGEMENT PLAN FOR CORAL, CORAL REEFS, AND LIVE/HARDBOTTOM HABITATS OF THE SOUTH ATLANTIC REGION  
AMENDMENT 4 TO THE FISHERY MANAGEMENT PLAN FOR THE GOLDEN CRAB FISHERY OF THE SOUTH ATLANTIC REGION  
AMENDMENT 9 TO THE FISHERY MANAGEMENT PLAN FOR SPINY LOBSTER IN THE GULF OF MEXICO AND SOUTH ATLANTIC  
AMENDMENT 1 TO THE FISHERY MANAGEMENT PLAN FOR THE DOLPHIN WAHOO FISHERY OF THE ATLANTIC  
AMENDMENT 19 TO THE FISHERY MANAGEMENT PLAN FOR THE SNAPPER GROUPEY FISHERY OF THE SOUTH ATLANTIC REGION

(INCLUDING A FEIS, IRFA, FRIR & FSIA/FIS)

October 2009

South Atlantic Fishery Management Council  
4055 Faber Place, Suite 201  
North Charleston, South Carolina 29405  
(843) 571-4966 / FAX: (843) 769-4520  
Toll Free (866) SAFMC-10  
email: [safmc@safmc.net](mailto:safmc@safmc.net)

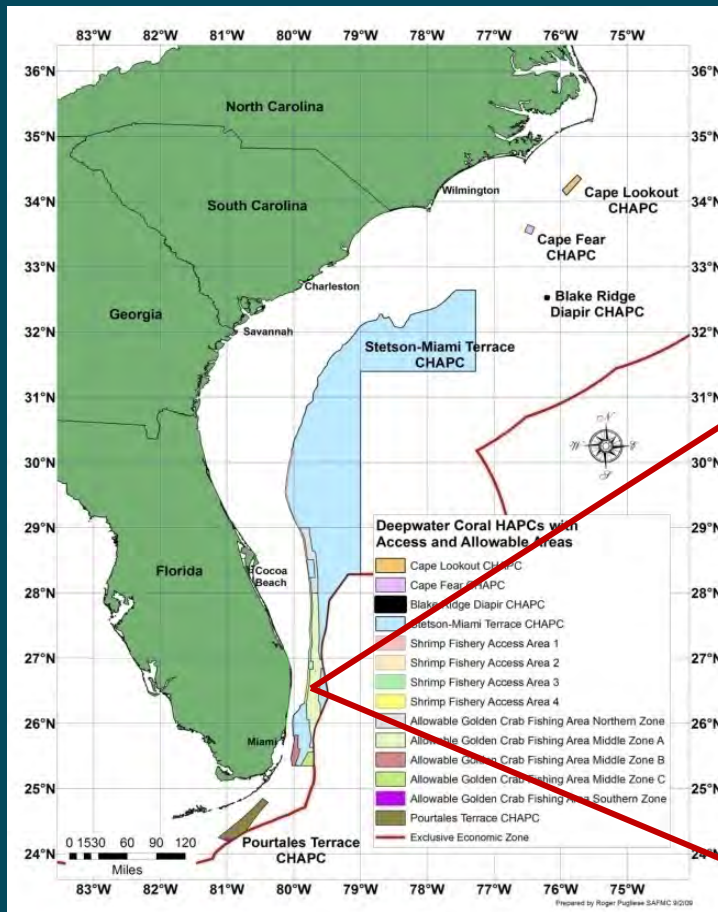
National Marine Fisheries Service  
Southeast Regional Office  
263 13th Avenue South  
St. Petersburg, Florida 33701  
(727) 824-5301 / FAX: (727) 824-5308



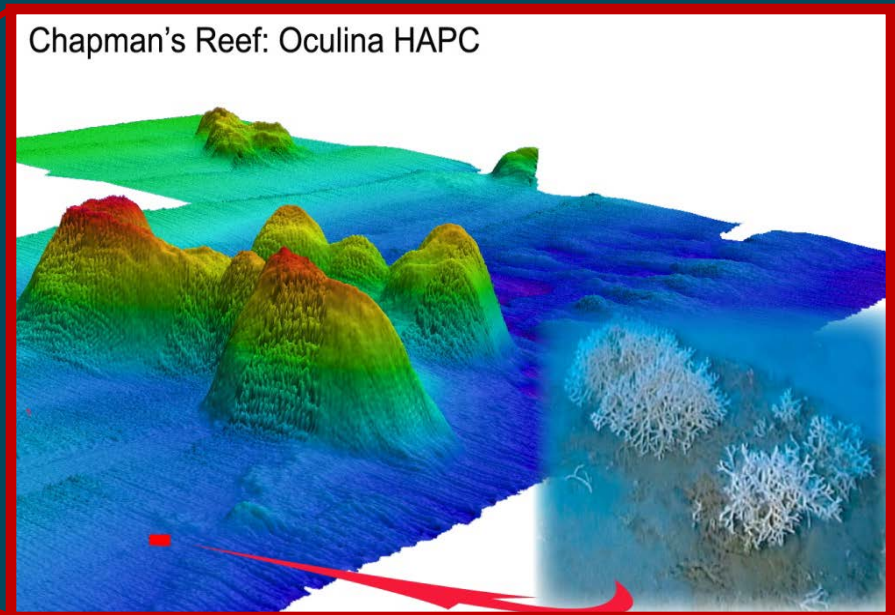
*This is a publication of the South Atlantic Fishery Management Council pursuant to National Oceanic and Atmospheric Administration Award No. FNA05NMFA410004*

# Development of Coral Habitat Areas of Particular Concern (C-HAPCs)

- The Coral, Coral Reef and Live Hard Bottom Habitat Fishery Management Plan provided for the established of CHAPCs



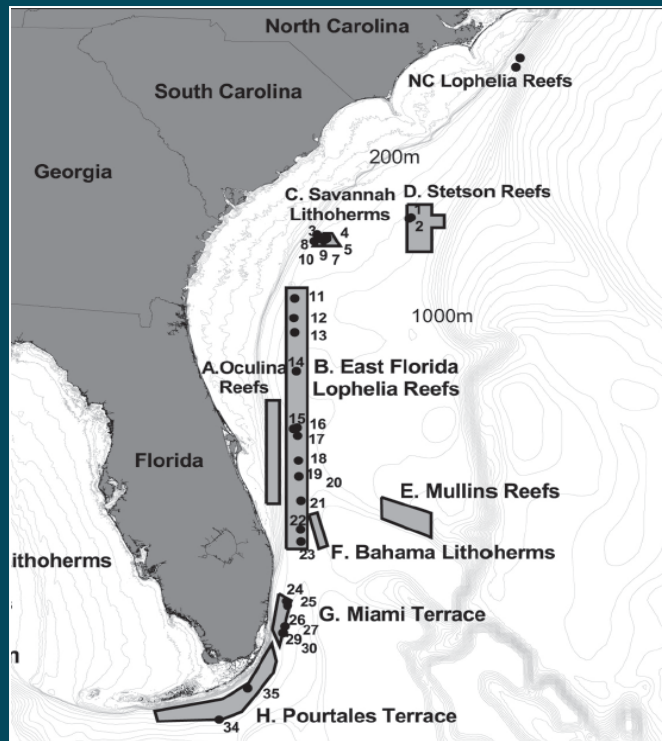
Reed et al. (2007)



Credit: Amanda Maness 2006



# Addressing Data/Information Gaps and Needs: Deepwater Coral Research and Monitoring Plan



## SOUTH ATLANTIC FISHERY MANAGEMENT COUNCIL

4055 FABER PLACE DRIVE, SUITE 201

NORTH CHARLESTON, SOUTH CAROLINA 29405

TEL 843/571-4366

FAX 843/769-4520

Toll Free: 1-866-SAFMC-10

E-mail: [safmc@safmc.net](mailto:safmc@safmc.net)

Web site: [www.safmc.net](http://www.safmc.net)

George Geiger, Chairman

Duane Harris, Vice-Chairman

Robert K. Mahood, Executive Director

Gregg Waugh, Deputy Executive Director

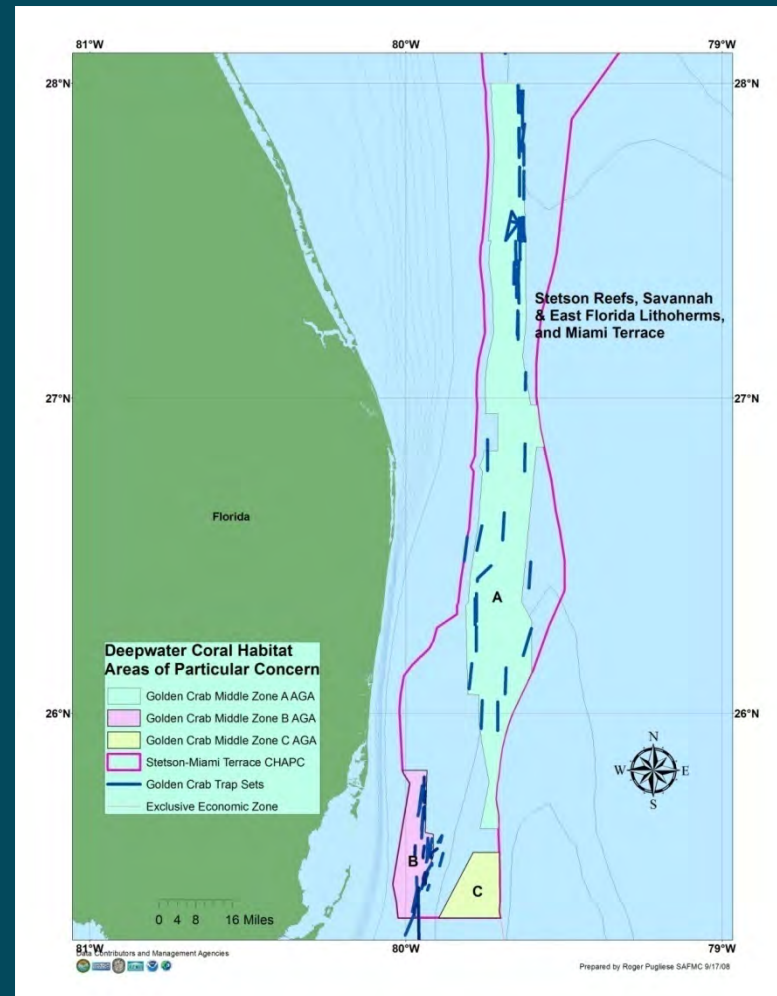
**FINAL**

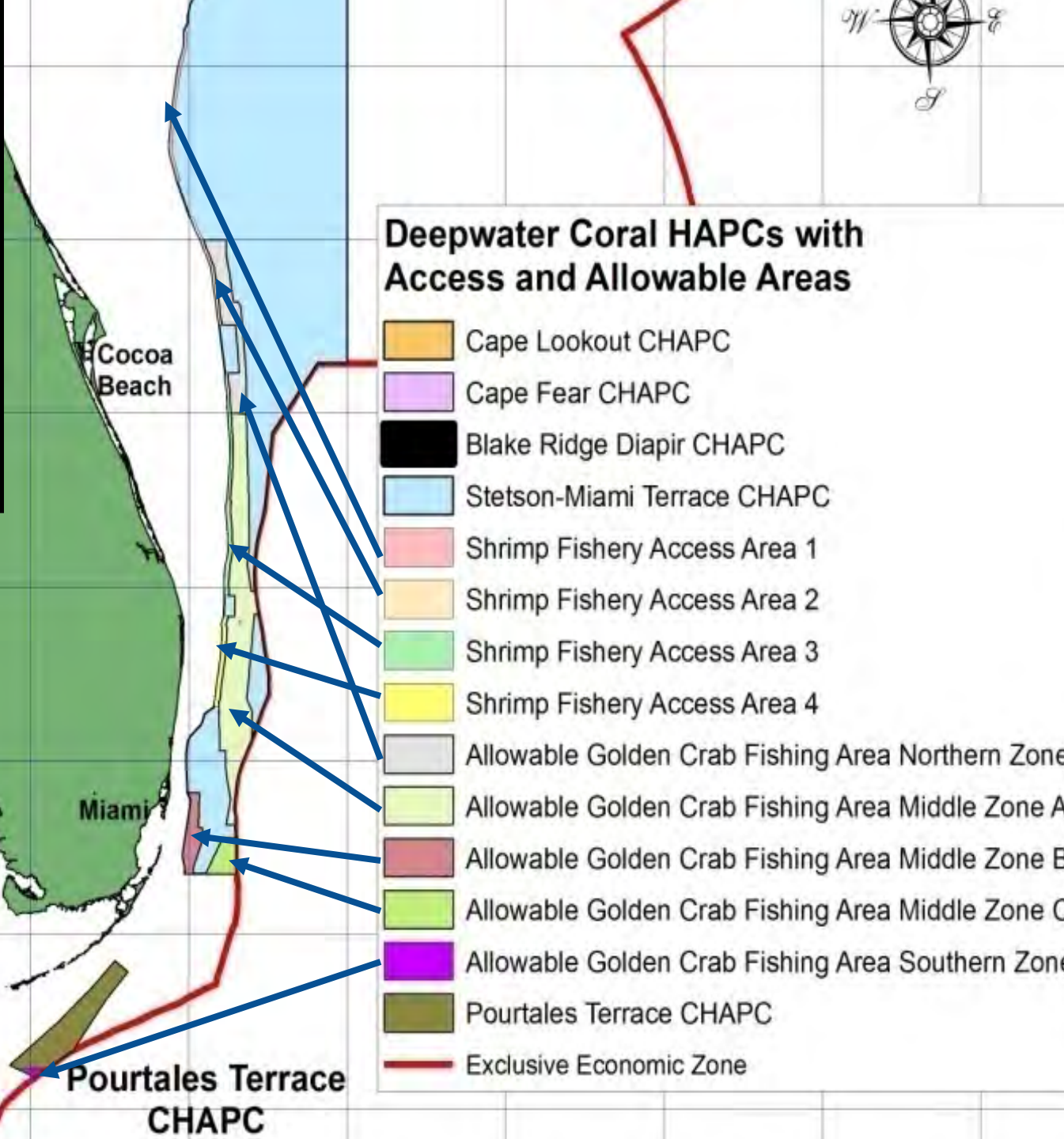
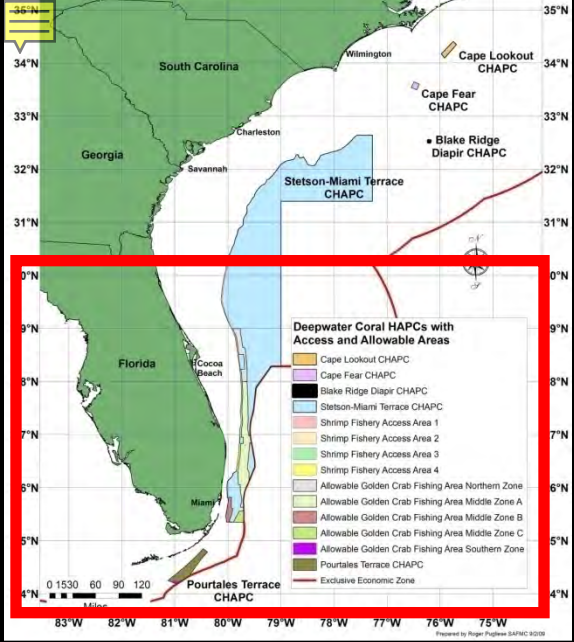
Deepwater Coral Research and Monitoring Plan for the South Atlantic  
Region

March 2007

# Conflict Resolution: Golden Crab and Shrimp Fishing Areas within DWC-HAPC

- Recognized traditional *Golden Crab and Shrimp Fishing* grounds were within proposed DWC-HAPC boundary.
- Sought input from fishers and Advisory Panels as to potential alternatives.
- Utilized expanded knowledge from DWC Research & Monitoring Plan related mapping to propose alternatives







# Restrictions In the Deepwater Coral HAPCs *Effective July 22, 2010*

No person may:

- (i) Use a bottom longline, trawl (midwater or bottom), dredge, pot, or trap.
- (ii) If aboard a fishing vessel, anchor, use an anchor and chain, or use a grapple and chain.
- (iii) Fish for coral or possess coral in or from the Deepwater Coral HAPC on board a fishing vessel.



# SAFMC Ongoing & Future Planning

- Review and evaluate status of Deepwater Coral Research and Monitoring Plan progress and objectives.
- Continue & expand CMSP in the management of resources in the EEZ
- Review , evaluate and update Comprehensive Fishery Ecosystem Plan - (i.e., CEBA2).

## SAFMC Selective Web Resources ([www.safmc.net](http://www.safmc.net))

- **Habitat Plan (viewable and downloadable by Section)-**  
[http://www.safmc.net/ecosystem/EcosystemManagement/HabitatProtection/SAFMC\\_HabitatPlan/tabid/80/Default.aspx](http://www.safmc.net/ecosystem/EcosystemManagement/HabitatProtection/SAFMC_HabitatPlan/tabid/80/Default.aspx)
- **Fishery Ecosystem Plan-** <http://www.safmc.net/ecosystem/Home/EcosystemHome/tabid/435/Default.aspx>
- **Comprehensive Ecosystem Based Amendment-1 (CEBA1)-** [http://www.safmc.net/Portals/6/Library/FMP/CE-BA1%20FINAL%20\(Oct%202009\).pdf](http://www.safmc.net/Portals/6/Library/FMP/CE-BA1%20FINAL%20(Oct%202009).pdf)
- **Habitat and Ecosystem Internet Map Server -**  
<http://www.safmc.net/EcosystemManagement/EcosystemBoundaries/MappingandGISData/tabid/632/Default.aspx>





**Thank you!**

For more information on SAFMC and CMSP efforts:

[Roger.Pugliese@safmc.net](mailto:Roger.Pugliese@safmc.net)

For SAFMC Coral Advisory Panel:

[BlairS@miamidade.gov](mailto:BlairS@miamidade.gov) or [Anna.Martin@safmc.net](mailto:Anna.Martin@safmc.net)